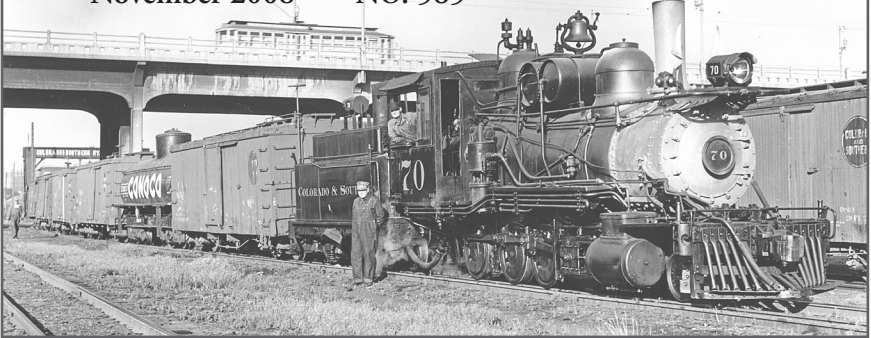


RAIL REPORT

November 2008 • NO. 585



Rocky Mountain Railroad Club • Rocky Mountain Railroad Historical Foundation

16-mm Film Night

November 11th, 2008 • 7:30 PM

The November program will be several 16-mm films, including one of the D&RGW narrow gauge in the winter of 1963. Other films will include Cajon Pass in 1969 and 1970, a wood burner at a lumber mill in Louisiana, and other subjects. If you have a 16-mm film (sound or silent) that you would like to show, contact Joe McMillan at 303-456-4564 before the meeting.

Please come join us for an enjoyable, educational evening at Christ Episcopal Church at 2950 South University Boulevard, University at Bates, where there is plenty of off street parking at the rear of the complex. Enter into Barnes Hall, where we hold the monthly meetings, on the mid-south side doors. Please bring a guest. **All programs are intended to provide an educational experience on railroading. The general public is welcome to attend. There is no charge for this meeting.**

RMRRRC Calendar

December 9th	Annual Business Meeting, Winter On The Great Western Railway
January 13th	Meeting
February 10th	Meeting

The Club's future program listing will provide members adequate advance information for planning. Proposed 2008 meeting and event dates are shown. Due to circumstances beyond our control programing and dates are subject to change without notice. Please contact Joe McMillan at jmcmillan20@comcast.net or phone 303-456-4564 with program ideas.

Notice Of Annual Meetings

The annual meetings of the Rocky Mountain Railroad Club and the Rocky Mountain Railroad Historical Foundation will be held on Tuesday, December 9, 2008, 7:30 PM at Christ Episcopal Church, 2950 South University Boulevard, Denver, Colorado. These meetings are called for the purpose of electing Officers and Directors for both organizations. At these meetings the Club or Foundation may conduct any other business as may properly come before these meetings.



UP 3985 beside the old Cheyenne steam shop on house steam, 10:00 PM on the evening before the trip to Laramie for the Rocky Mountain Railroad Club on May 26, 1984. – Photo by John Bush.

From the President

By Jim Ehernberger

At the October meeting we were honored to have Susan Mackenzie, the daughter of Carl Hewitt, the Founder of the Rocky Mountain Railroad Club 70 years ago, in attendance. Her sister and a granddaughter were also present. Susan came to the Car 25 roll out on

August 9th and Don Ziesch enjoyed a conversation with her and suggested they attend the meeting. A copy of the Club history book by Dave Goss was presented to Susan at this meeting. Other family members already had a copy.

From the President



UP 844 at Perkins, Wyoming, with 9 cars on November 20, 1960.
– Photo by R. H. Kindig.

The ‘bring your own slides’ night turned out real well. This provided an opportunity for members to show some of their photographic efforts, which proved to be a wide variety of subjects and locations. We appreciate the interest and involvement of everyone who participated.

Union Pacific engine 3985 returned to Cheyenne on Thursday, October 9th from its long journey to St. Paul, Minnesota. This is the last scheduled steam trip for 2008. At the present, a request is pending for the Denver Post Cheyenne Frontier Days train. Normally the schedules for steam trips are not finalized until after the first of each year.

The Club operated UP engine 844 on the first trip in excursion service (after regular steam operations ceased) on November 20, 1960. This was a tough battle for our Trip Chairman Ed Haley as the railroad management in Omaha was not interested in cooperating. Even-

tually Ed wrote a letter to the Chairman of the Board of Directors, E. Roland Harriman, and Mr. Harriman authorized the trip on this date. At the time, anyone desiring to place bets would have lost as the consensus was when the locomotive required heavy repairs (new flues included) that it would never see further service. Instead, the railroad realized the great public relations benefit, and over the years engine 844 became the “Goodwill Ambassador” for the Union Pacific making trips to world fairs and elsewhere. The persistence of our own Ed Haley should be noted in records, as the prime reason the current UP steam program exists. That took place 48 years ago!

The Union Pacific needs to be commended for maintaining their Heritage Fleet of locomotives and cars, as no other Class 1 railroad has compared with this effort and we thank them for providing us this operation.

From the President



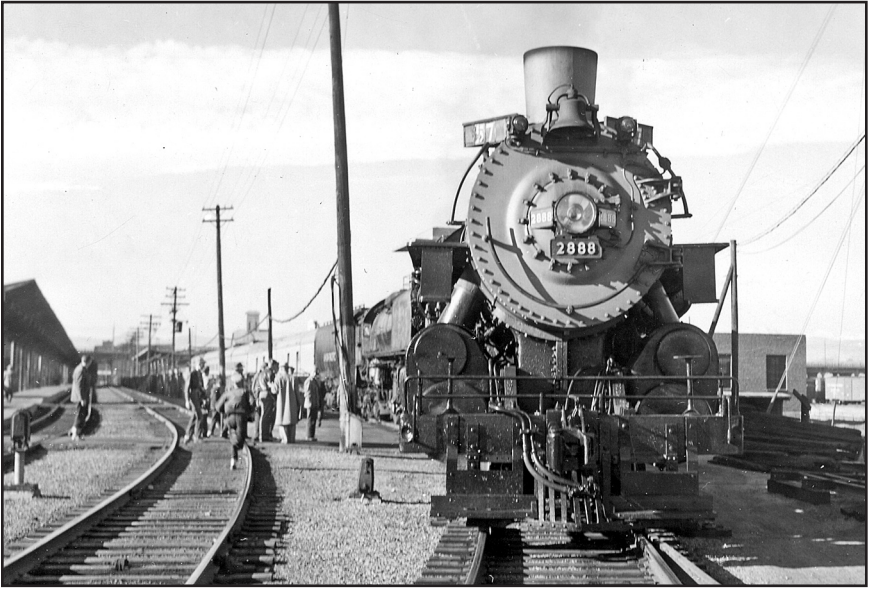
UP 844 at Wyoming, Wyoming, with a 9-car Rocky Mountain Railroad Club Special train on November 20, 1960. – Photo by R. H. Kindig.

Of course, we are thankful to all of the railroads in the area who provided us with many fine excursion trains. The Rio Grande narrow gauge operations were among the favorite trips, especially from Alamosa to Durango, until 1966. The Colorado & Southern operated many trips to various locations in the Denver area, and some included joint C&S and Great Western operations. The Club has been lucky over the years to have been in a location where such operations were available.

As you know, times have changed, and

today we encourage our membership to join in on the Trains Unlimited Tours. We could not always meet the guarantees and sell the special trains depending upon our own membership, so the arrangement with TUT has provided our membership with a wide variety of trips. From a personal position, I can vouch for the quality of trips TUT has operated, and their business practices. Our members receive handsome discounts by providing TUT with a copy of the membership card when booking trips. The Club receives a little revenue as well. If you are looking for a trip somewhere for

From the President



Union Pacific Train 57, with engines 2888 & 812 at Denver Union Station on Halloween, October 31, 1954. – Photo by George A. Trout.

a great opportunity to get a lot of photographs and visit unique places, then Trains Unlimited is the answer to your wishes and dreams.

North Platte, Nebraska, opened their new Golden Spike Tower in June, and it is well worth a visit. The tower is located just east of the diesel locomotive shop facility and south of the yards. While it is not real close to hump yard operations (Homeland Security changed this idea), it is a very fascinating place to see a lot of activity taking place. The view is magnificent from the eight-story tower. An elevator takes you to the top floor, which is glass-enclosed, and the next level below is open-air for photography. The entry building appears similar to a railroad station, but it is not a duplicate of what once existed at North Platte.

We are looking forward seeing you at the November 11th meeting.

Please mark your calendar on Saturday, January 31st, for the annual Jeffco Train Show at the Jefferson County Fairgrounds in Lakewood, Colorado.

Members may contact me at:
jimrrtrain@gmail.com
Phone: 307-637-4011
Rocky Mountain RR Club – President
PO Box 2391
Denver, CO 80201-2391

Please note my new e-mail address. If calling on the telephone, please identify your call as RMRR Club business so I will know your call is not telemarketing. Thank you. 7 to 9 PM is preferred.



Engine 40 passes the newly rebuilt 9,000 gallon Jack's Cabin replica water tank at No Agua during the Whistle Stop Event at the Colorado Railroad Museum on August 23rd, 2008. – Photo © 2008 Bruce Nall.

Campaign “Whistle Stop” Train

By Bruce Nall and Donald Tallman

As you read this, unless there was an Electoral College tie, we should have a new President and the political election advertising should be over.

The “Whistle Stop” train tour was an important campaign strategy for candidates for many years. When a candidate's train pulled into town, the whole town turned out to hear speeches, and the festive fair-like atmosphere made it an important civic event.

The Colorado Railroad Museum recreated that special atmosphere with

their Whistle Stop Event in August, harkening back to the Democratic National Convention held in Denver in 1908.

Red, white and blue bunting festooned the railcars and picnic grounds. Men and women in Victorian costume mingled with the crowd to help create the old fashioned atmosphere. Professional reenactors portraying historical political figures from long ago gave excerpts from their famous speeches.

The day also featured old-fashioned games from a more innocent time.

Campaign “Whistle Stop” Train



Presidential candidate Abraham Lincoln, portrayed by historical reenactor John Voehl, makes his point at the CRRM. – Photo © 2008 Bruce Nall.



Presidential candidate Abraham Lincoln with his entourage at the CRRM. – Photo © 2008 Bruce Nall.

Current Railroad Happenings



Union Pacific Challenger 3985 began a 1,750 mile, 22-day, UP 3985 Rail Fest and Twin City Limited Tour which took it to five Midwestern states including stops at St. Paul, Minnesota, and Boone, Iowa. The train departed Cheyenne, Wyoming, on 9/18/08. Behind water tenders UPP 809 and 814 was Centennial (model DDA-40X) 6936 for a portion of the trip east. This was the 4-6-6-4's first trip after its rebuild at the Cheyenne steam shop.

– Photo © 2008 by Chip.

Current Railroad Happenings

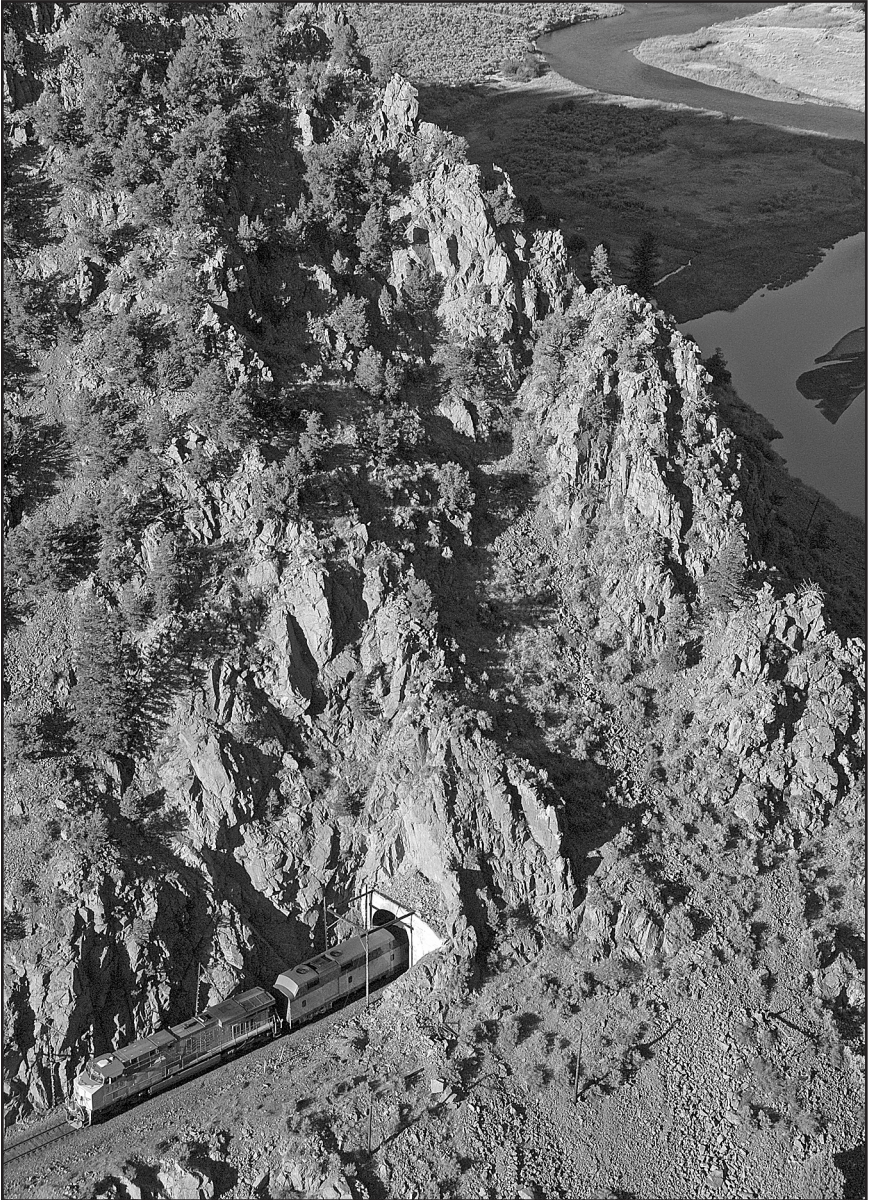


Union Pacific's 15-car Director's Special came from Council Bluffs, Iowa, (Heritage units added at North Platte, Nebraska) arriving Denver Union Station, track 5, Denver, on 9/22/08. Rio Grande Heritage SD70ACe 1989 and Chicago & North Western UP 1995 were the power during their September 22-26 visit. Train included dome lounge HARRIMAN and former C&NW track inspection car FOX RIVER. Train departed Denver 9/25/08 to inspect Moffat Tunnel line making it as far west as Rifle, Colorado, with overnight at Kremmling. Bruce Black paid homage in foreground as blue flag was put up. – Photo © 2008 by Chip.



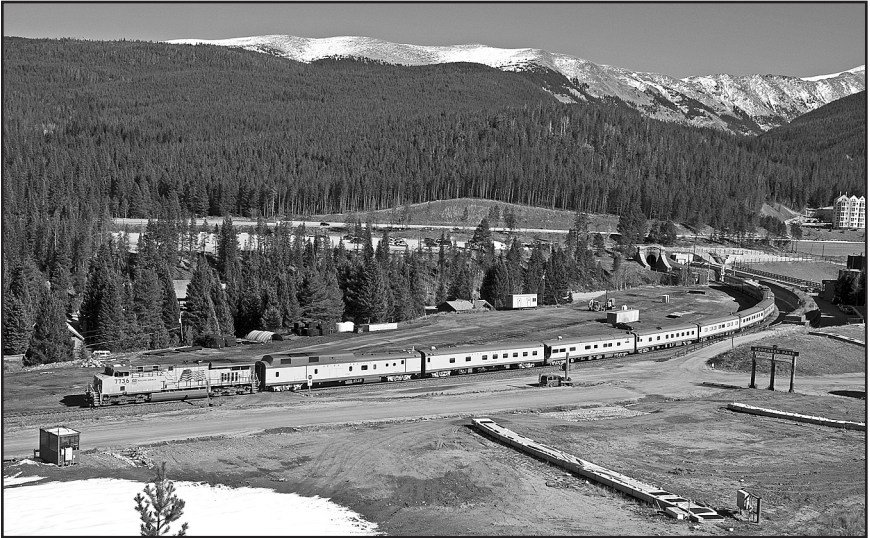
BNSF's theatre style inspection car 32-William Barstow Strong was on southbound Laurel, Montana, to Denver, passenger special. Mr. Bredenberg, (left) with laptop computer, and BNSF's General Manager Jansen from Denver check out the Front Range line as train traversed Mason Street at Fort Collins, Colorado, on October, 9, 2008. After Denver Union Station layover, the train moved north to Seattle, Washington, that evening. – Photo © 2008 by Chip.

Current Railroad Happenings



Union Pacific ES44AC 7736 popped out of tunnel 39 with power car UPP 2066 about 4:40 PM on October 15, 2008 with an 11-car Denver to Grand Junction, Colorado, passenger special. Autumn 2008 has seen five UP passenger special moves over the Moffat Line west of Denver in under three weeks, starting with the UP Board of Directors train in September. – Photo © 2008 by Chip.

Current Railroad Happenings



Snow had dusted the Colorado Rockies Continental Divide earlier in week before UP 7736 West with an 11-car Denver to Grand Junction, Colorado, passenger train emerged from Moffat Tunnel at Winter Park Ski Resort. Yes, that's man made snow at lower left. Behind UP 7736 is power car UPP 2066 with large roof hump for portable generator(s). The car was one of five lightweight postal storage cars built by St. Louis Car for the UPRR back in 1960. They were numbered 5816 to 5820, this one being 5816. It was rebuilt as a power car in 2004.

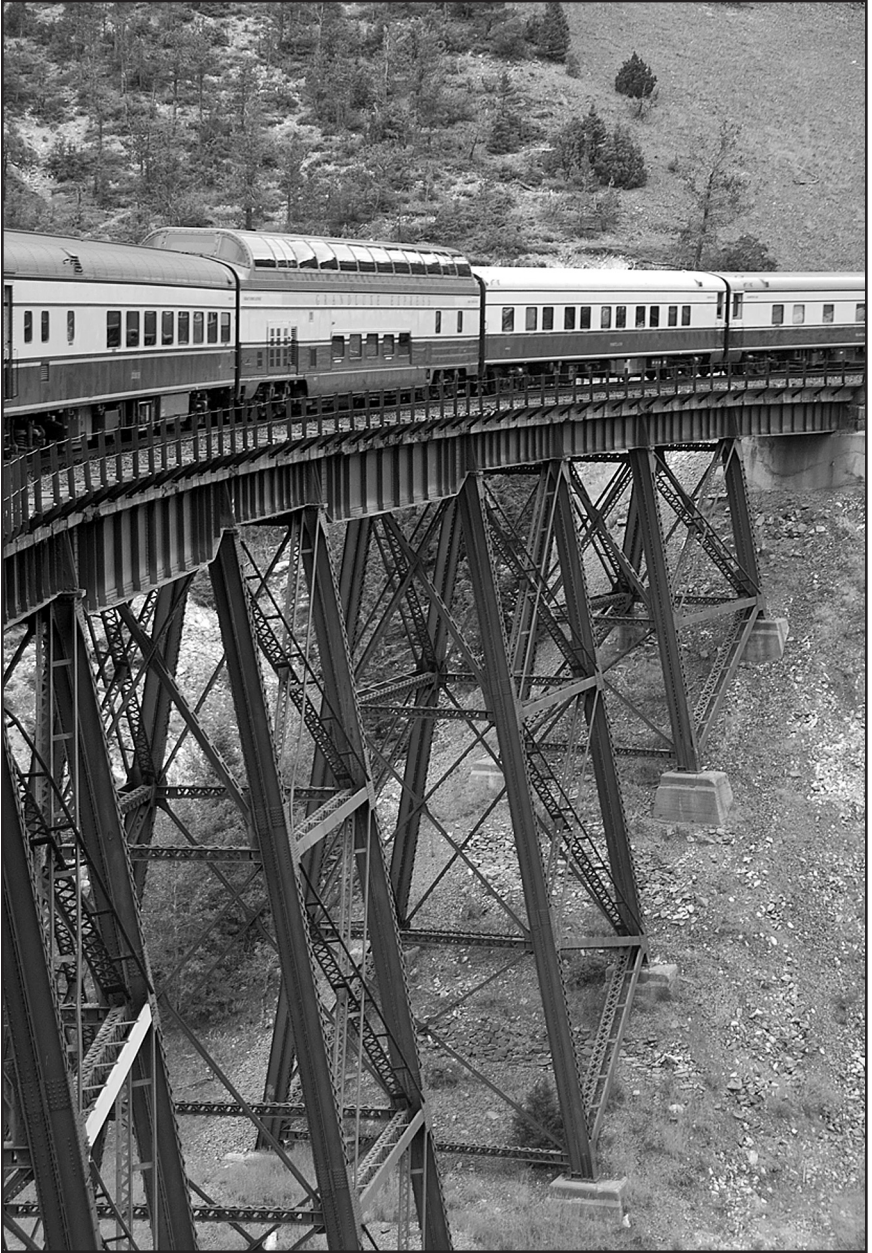
– Photo © 2008 by Chip.



Union Pacific removed their cannibalized steam locomotive, 4-8-4 #838, from the Cheyenne Roundhouse on October 10, 2008 where its been a parts source to UP 844 for many years. Note that the engine is missing many appliances including the front pilot truck. UP SW-10 switcher 96 moved the seldom seen steam engine to the south side of the turntable where it will face the elements this winter.

– Photo © 2008 by Chip.

Current Railroad Happenings



The GrandLuxe Express diner ZURICH (left) and full-length dome COPPER CANYON cross Montana Rail Link's Greenhorn Trestle climbing Mullan Pass west of Helena, Montana, on August 9, 2008. – Photo © 2008 by Chip.

Current Railroad Happenings



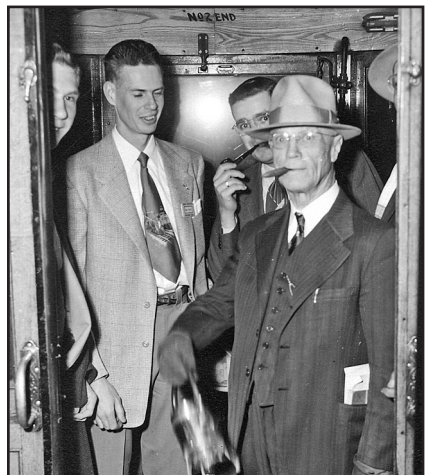
The GrandLuxe Express travelled the former Northern Pacific RR rails, now Montana Rail Link 2nd Subdivision, between Livingston and Helena, Montana, on August 8, 2008. Folks were enjoying dinner in full length dome COPPER CANYON as it passed the water tank at Logan, Montana, milepost 164.6 (junction for line to Three Forks and Spire Rock, Montana).

The GrandLuxe Express shut down its luxury 20-car train on August 28, 2008 upon arrival at Tacoma, Washington. The Evergreen, Colorado, based operation stated that GrandLuxe Rail Journeys would cease operations with the return of the train to Tacoma on Thursday morning, August 28, 2008. The US economic situation and credit availability contributed to the closing. – Photo © 2008 by Chip.

Correction

In the August newsletter, the name of the Trainmaster, Cyp Matthews, was misspelled. Another photo by George A. Trout of Cyp and several long-time members of the Club is on the right.

From left, Ed Gerlits – partly visible behind the door frame at left, Neal Miller, Loren Weed and “Skipper” Cyp Matthews swinging his lantern on D&IM Car No. 25 enroute to a Rocky Mountain Railroad Club annual dinner in Golden, Colorado, on April 2, 1952.



Trains Unlimited, Tours 2008 & 2009 Tentative Trip Schedules

Discounts on tours are available to Club members.

Just provide your Rocky Mountain Railroad Club membership number.

For TUT information call 1-800-359-4870

or visit our Club web page at: www.trainsunlimitedtours.com/rmrrc/

2008

December 14 - 19 Christmastime in
Santa Fe and Taos

2009

February 14 - 16 Valentine Snowflake
Express

February 14 - 15 Western Maryland Winter
Photo Freight

March 2 - 3 Arizona Adventure

March 28 - 29 Central Coast Wine Express

April 2 - 14 Australian Rail Explorer

April 15 - 24 New Orleans And Cajuns
Express

April 25 Domes to San Diego

April 26 California Gold Express
North

May 2 - 3 La Veta Pass Photo Freight

May 4 - 11 Sierra Madre Express I

Colorado Railroad Museum 2008 Scheduled

Special Operation Days

For information call 303-279-4591

http://www.crrm.org/train_trips.htm

Thanksgiving
Goosefest November 29 - 30

Santa Claus Express December 13 - 14

Rocky Mountain Railroad Club Members in good standing, and upon presentation of a current membership card, are entitled to free admission. Members are invited to join the Colorado Railroad Museum (a Museum membership provides certain merchandise discounts), and members may participate in restoration or other maintenance programs as volunteers.

Please contact the volunteer coordinator at the CRRM, telephone 303-279-4591.

Intermountain Chapter, NRHS

2008 Event Schedule

For information call 303-298-0377

<http://www.cozx.com/nrhs>.

Monday, November 10, 2008: Intermountain Chapter Annual Banquet, Denver Press Club, Downtown Denver. We are pleased to have as guest speaker Peter Hansen, current editor of *Railroad History*, the journal of the Railway & Locomotive Historical Society. He's best known to this audience as author of over 50 bylines in *Trains* and *Classic Trains* magazines.

The buffet dinner will be tossed salad, oven roasted chicken breast, wild rice, green beans, roll and butter, a chocolate brownie dessert, and coffee or tea. Cocktail hour is a cash bar in the club room at 6:00 PM. Dinner is upstairs at 7:00 PM, followed by our program.

Cost for the banquet is \$32 per person, paid at the door. Reservations must be made at the Chapter office (303-298-0377) **NO LATER** than Thursday, November 6th. We look forward to seeing you.

Publishers Statement — Rocky Mountain Rail Report

The Rocky Mountain Rail Report (ISSN 1040-9223) is published by the Rocky Mountain Railroad Club and the Rocky Mountain Railroad Historical Foundation.

First class postage paid at Denver, Colorado.

Postmaster, send address changes to:

Rocky Mountain Rail Report, PO Box 2391, Denver, CO 80201-2391

Club Information

Rocky Mountain Railroad Club
PO Box 2391
Denver, CO 80201-2391

Club Officers

	President	Jim Ehernberger
	VP - Foundation	Darrell Arndt
	VP - Club	Herb Edwards
	Secretary	Roger Sherman
Web: http://www.rockymtnrrclub.org	Treasurer	Jimmy Blouch

Membership Information

Membership in the Rocky Mountain Railroad Club may be obtained by sending the annual dues to the Club address listed above.

Regular membership dues are \$35.00. Overseas regular membership dues are \$45.00.

Contributing membership is \$50.00. Sustaining membership is \$70.00.

Patron membership is \$100.00. Golden membership is \$500.00.

An associate membership for spouses and children is \$25.00 additional.

Members joining after April may send a payment of \$3.00 for each month remaining in the year.

Members of the Rocky Mountain Railroad Club are also members in the Rocky Mountain Railroad Historical Foundation, the non-profit arm of the Rocky Mountain Railroad Club.

Board Meetings

Members are always welcome to attend any board of directors meeting. Please contact any Club officer for the date, time and location.

Newsletter Contributions

Newsletter contributions and items for publication should be sent to:

Bruce Nall, Editor
Rocky Mountain Rail Report
PO Box 620579
Littleton, CO 80162-0579

Fax: 303-978-0402
E-mail: selectimag@aol.com

Items for the December Rail Report should be sent by November 11th.



BOX 2391
DENVER, COLORADO 80201



FIRST CLASS

